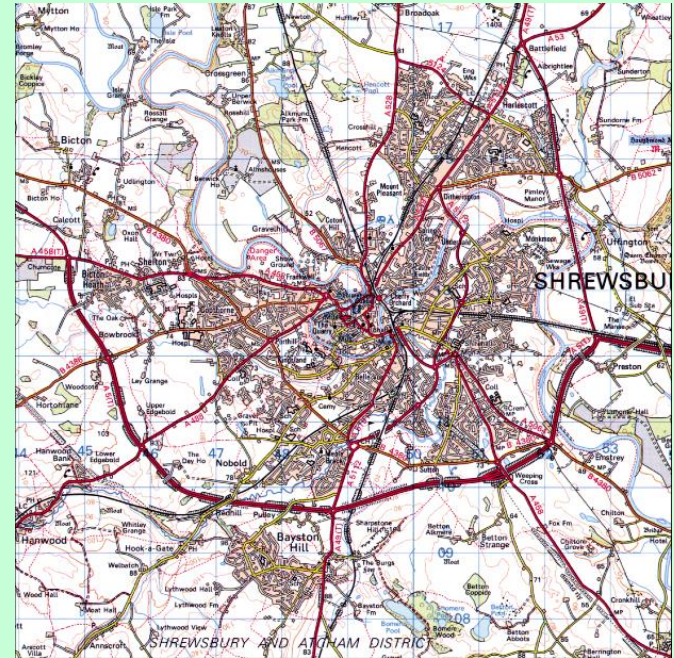
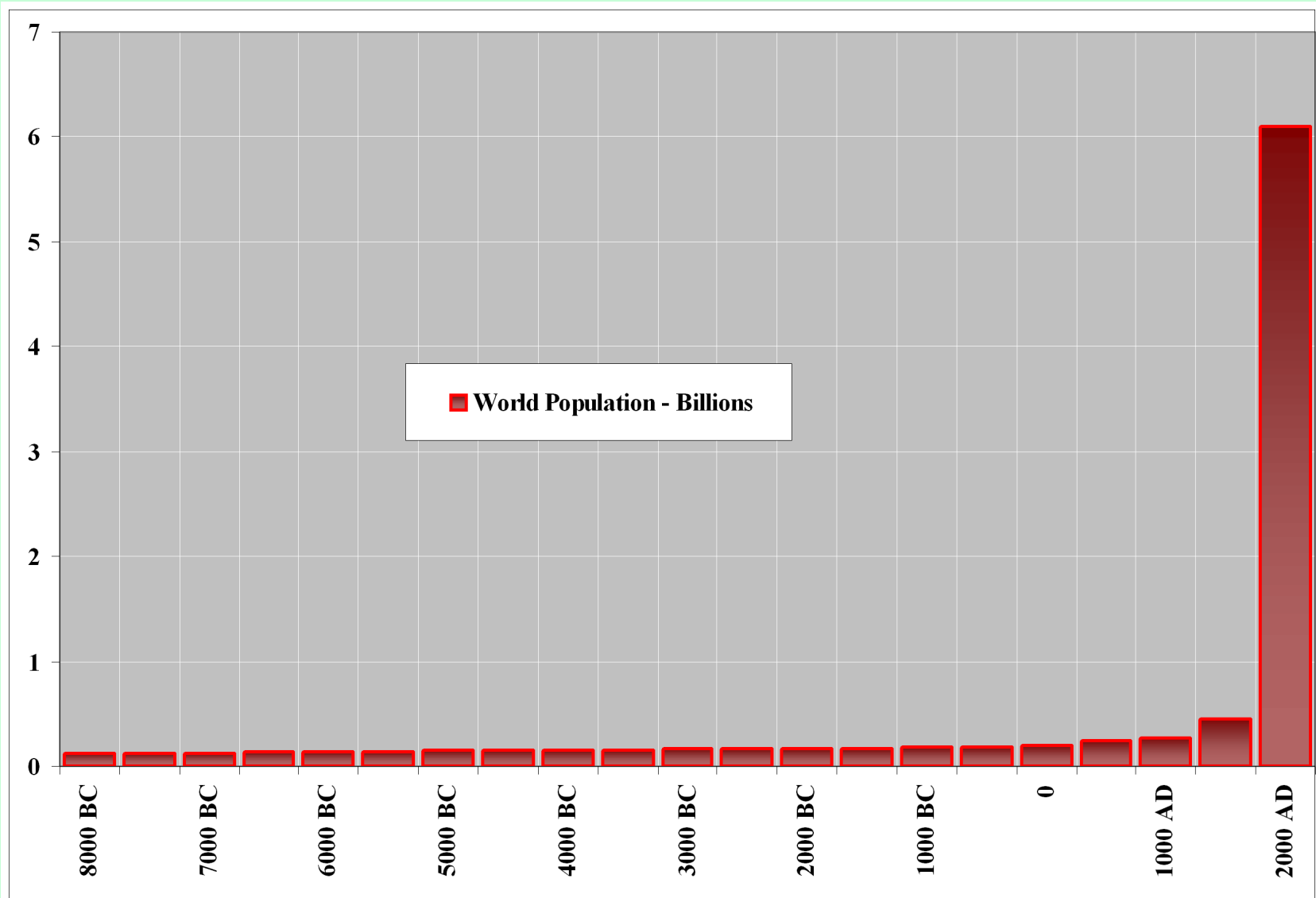


The Growth of Shrewsbury

(and the power of compound growth)



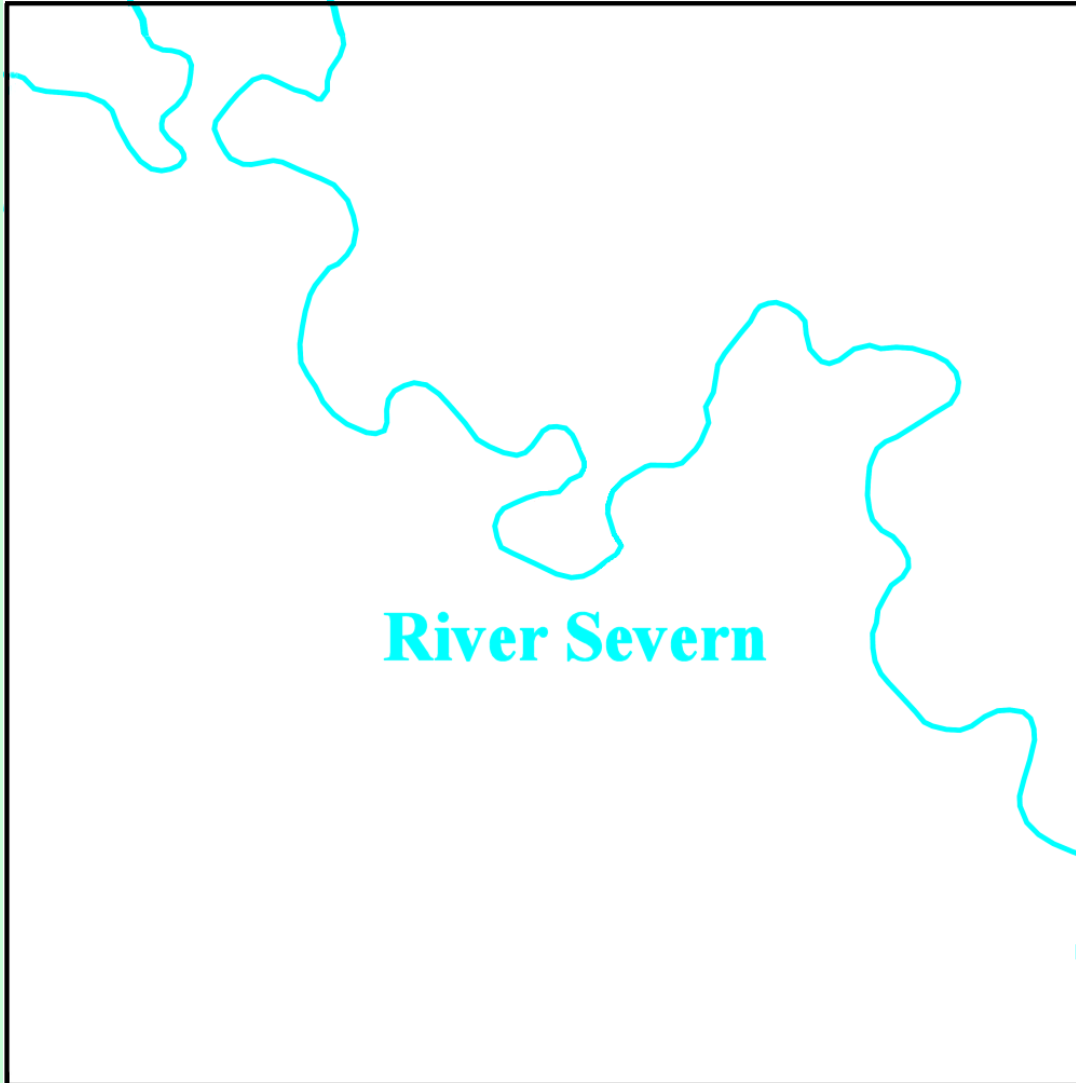
A look at the growth of the built up areas of the town from the year 1880 to the present day, viewed at 40 year intervals.



Every week the World population increases by more than 1,500,000 people. That's over 3,000,000 new carbon footprints every week. By 2017 world population was estimated at 7.4billion

Having dealt with the world's problems let's concentrate on their effect on the town of Shrewsbury

10 kilometres



10 kilometres

Here is a 10 kilometre square centred on Shrewsbury with the River Sever meandering through it

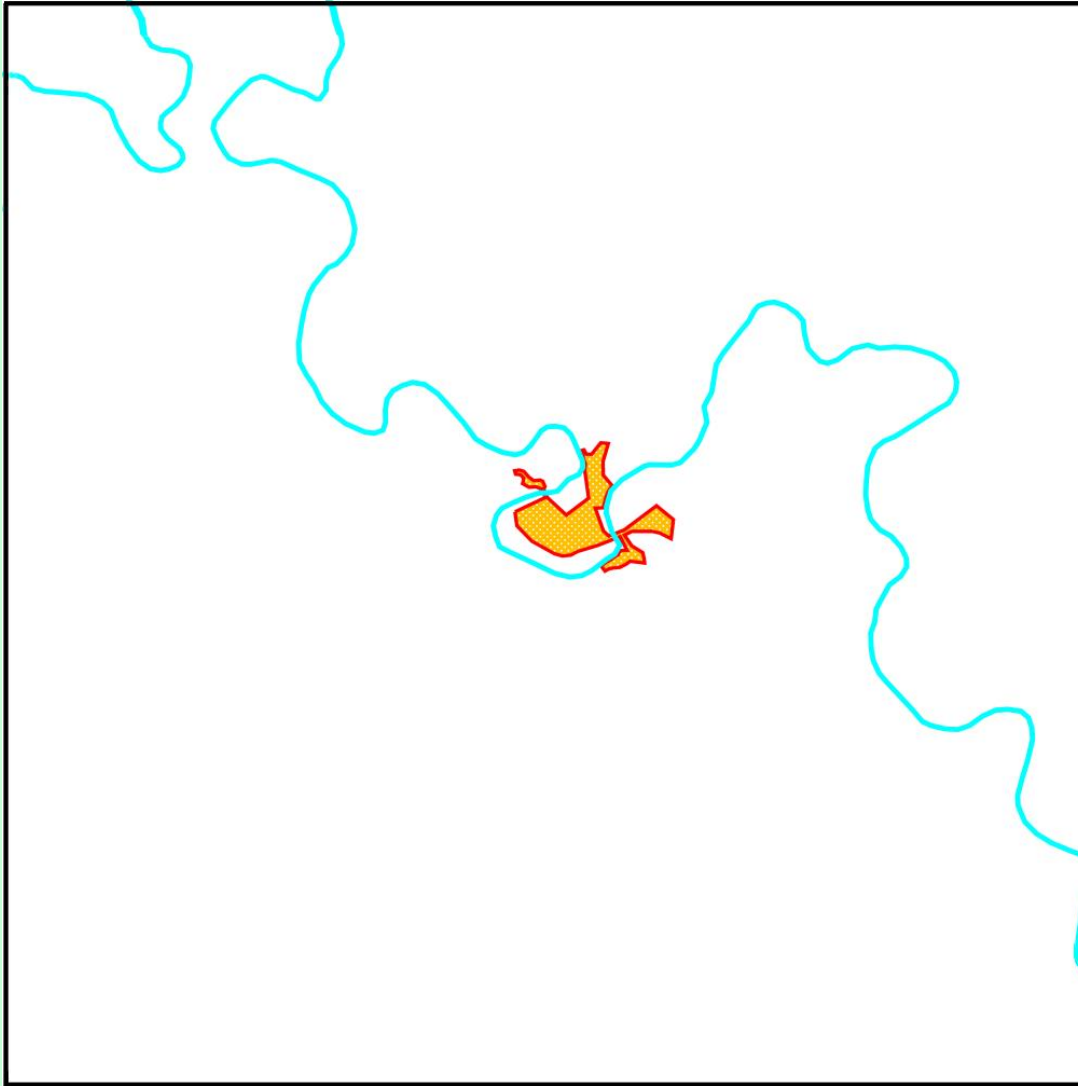
We can't go back to 8,000 BC but we can look at about 400 years ago

Shrewsbury in 1610

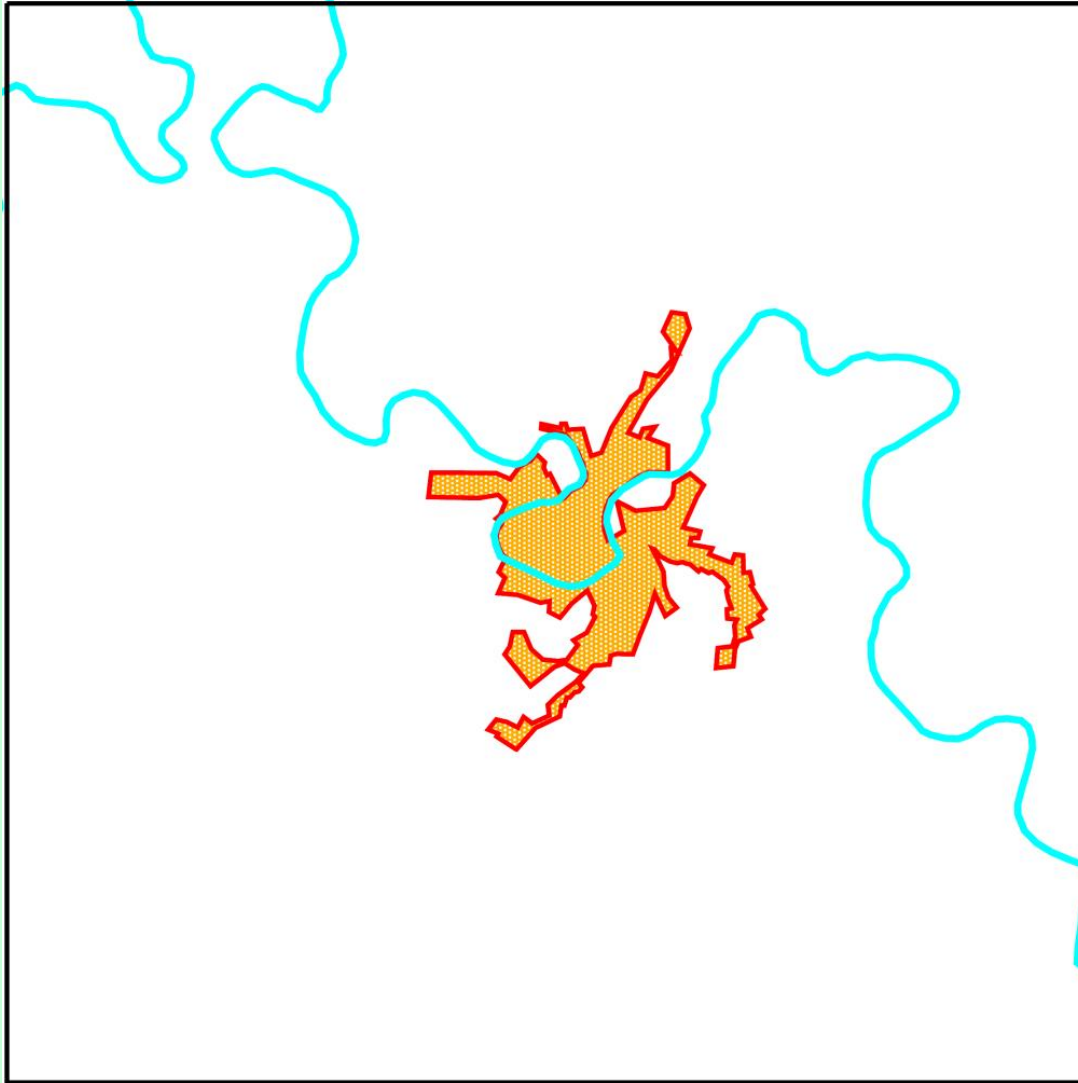
Population circa 6,000+

Dwellings circa 1,050

Hectares circa 55



**But for the real comparative work we start in 1880 and
move forward in 40 year steps to the turn of the millennium**

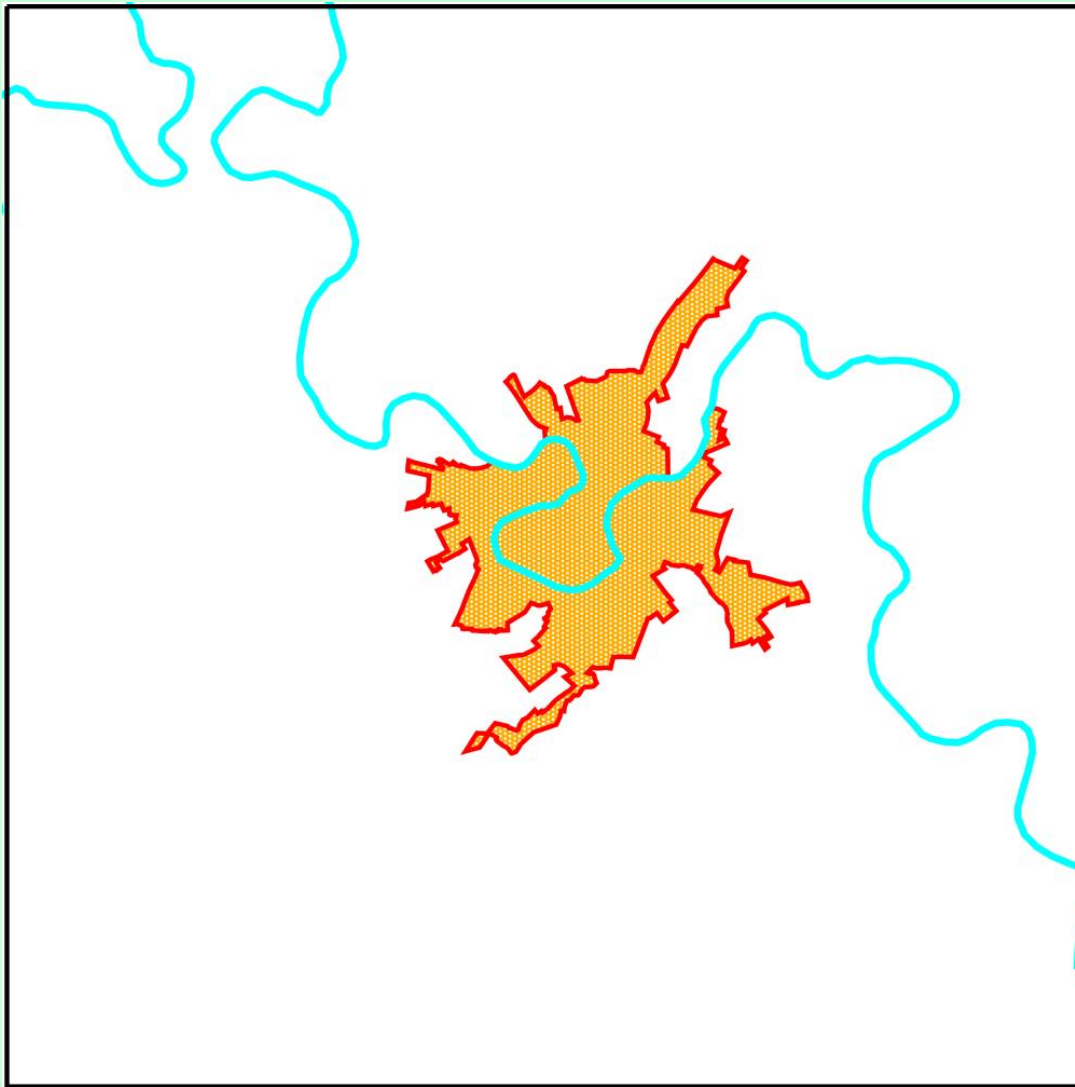


Shrewsbury in 1880

Population **26,478**

Dwellings **5,509**

Hectares **320**

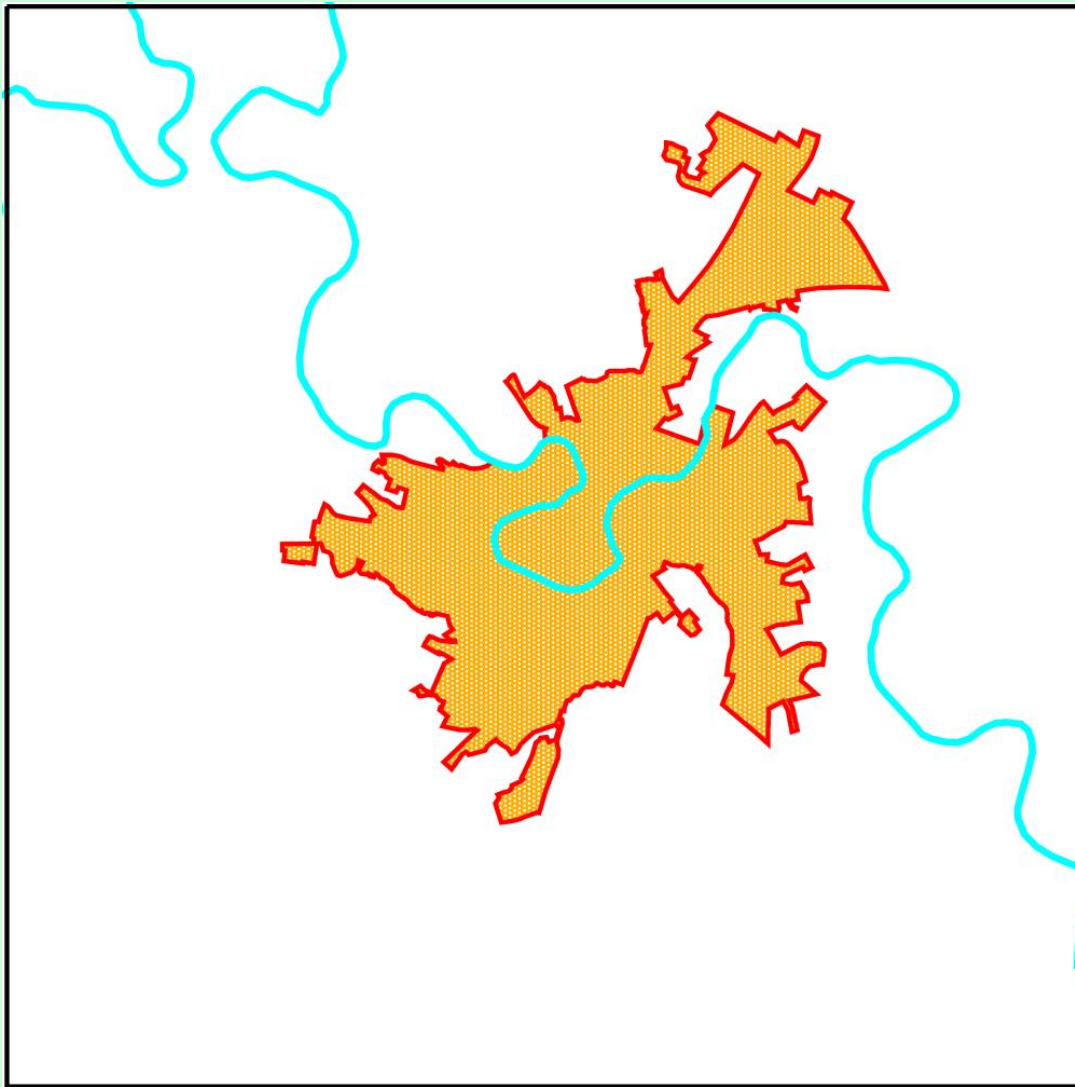


Shrewsbury in 1920

(increase since 1880)

Population	31,006
an increase of	17%
Dwellings	6,742
an increase of	22%
Hectares	563
an increase of	76%

The most dramatic increase was that in the built area



Shrewsbury in 1960

(increase since 1920)

Population 50,437

an increase of 63%

Dwellings 15,761

an increase of 134%

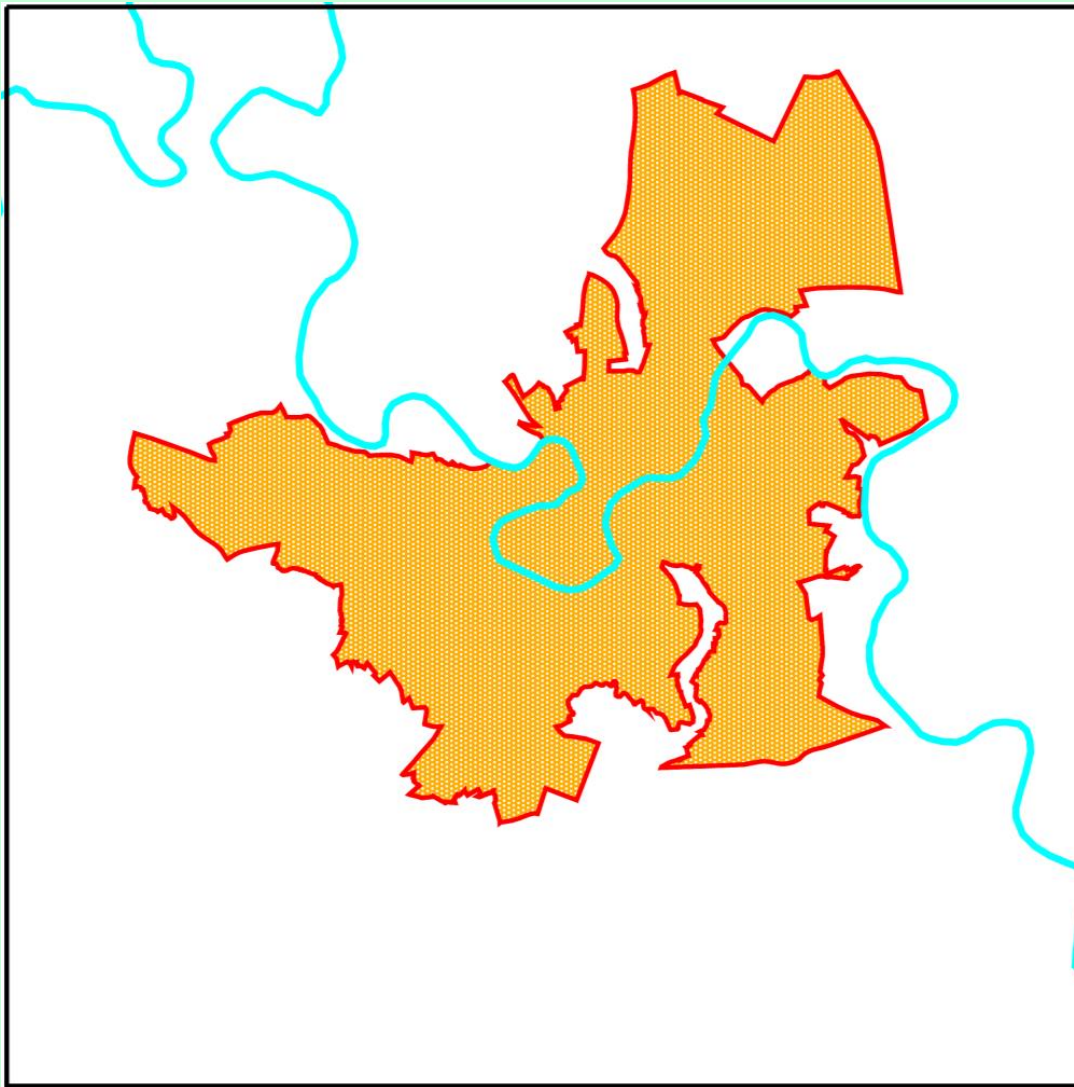
Hectares 1,178

an increase of 109%

Between 1920 and 1960 growth was really dramatic – partly after building Shrewsbury's first by-pass in 1933

Shrewsbury in 2000

(increase since 1960)



Population **67,126**

an increase of **33%**

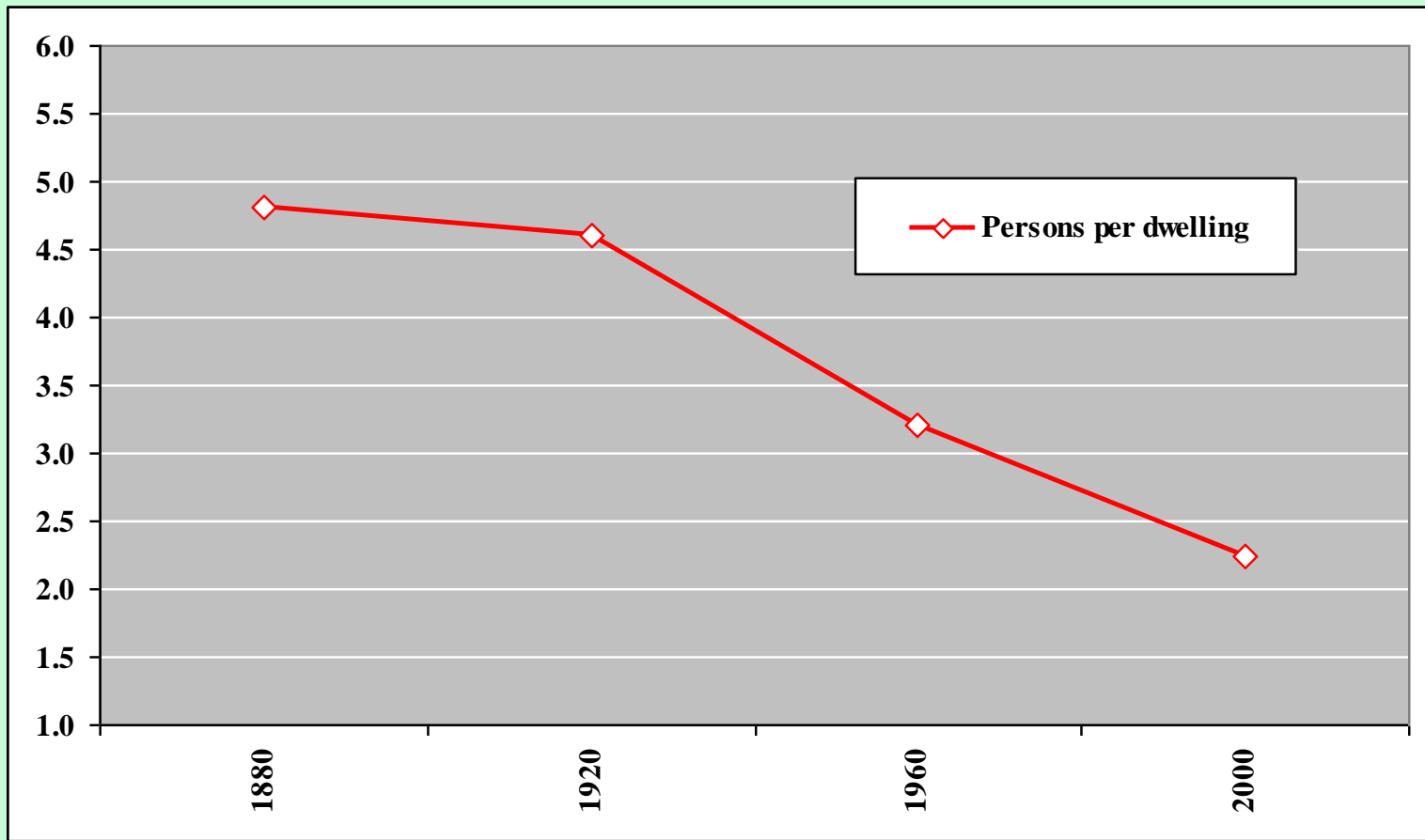
Dwellings **29,959**

an increase of **90%**

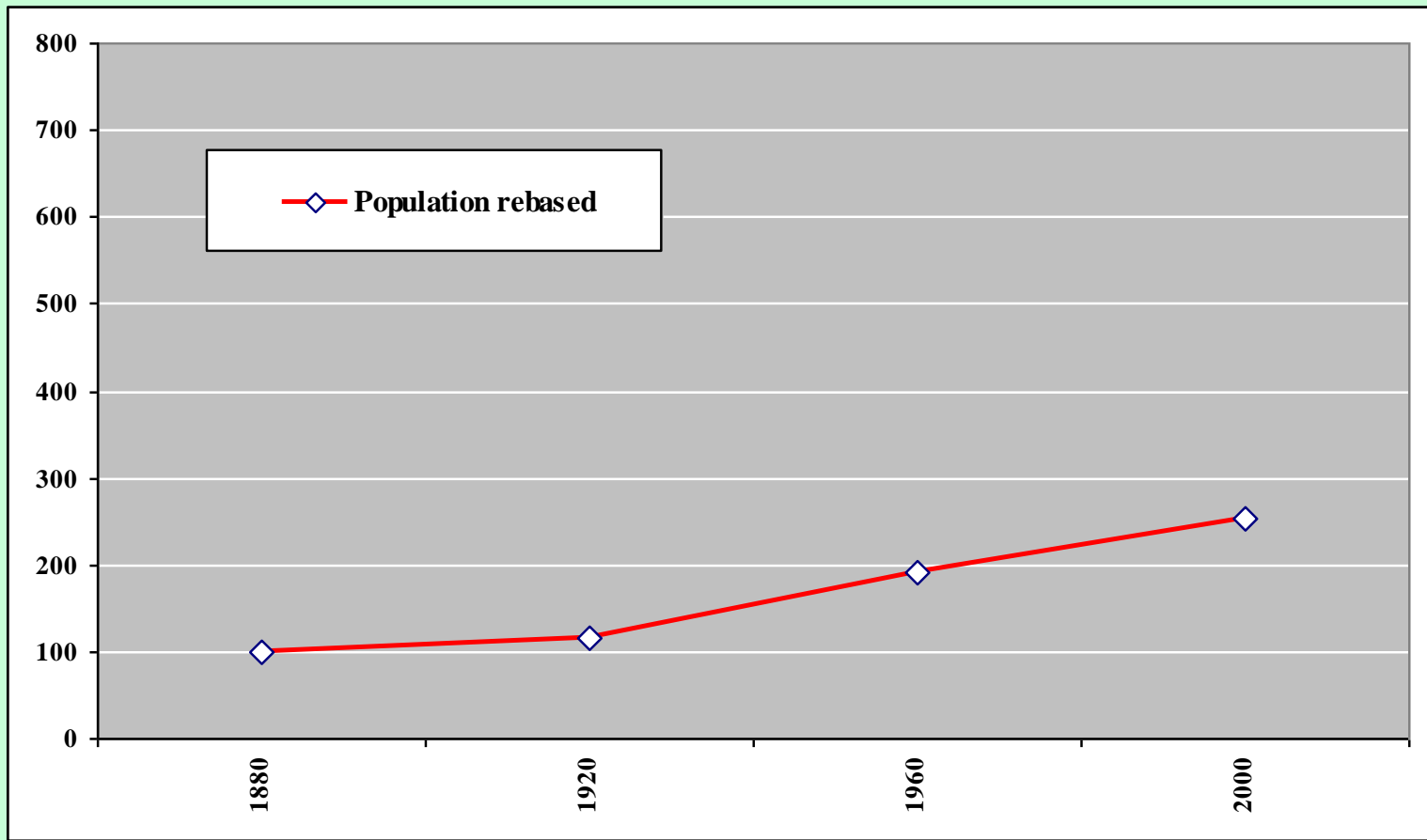
Hectares **2,167**

an increase of **84%**

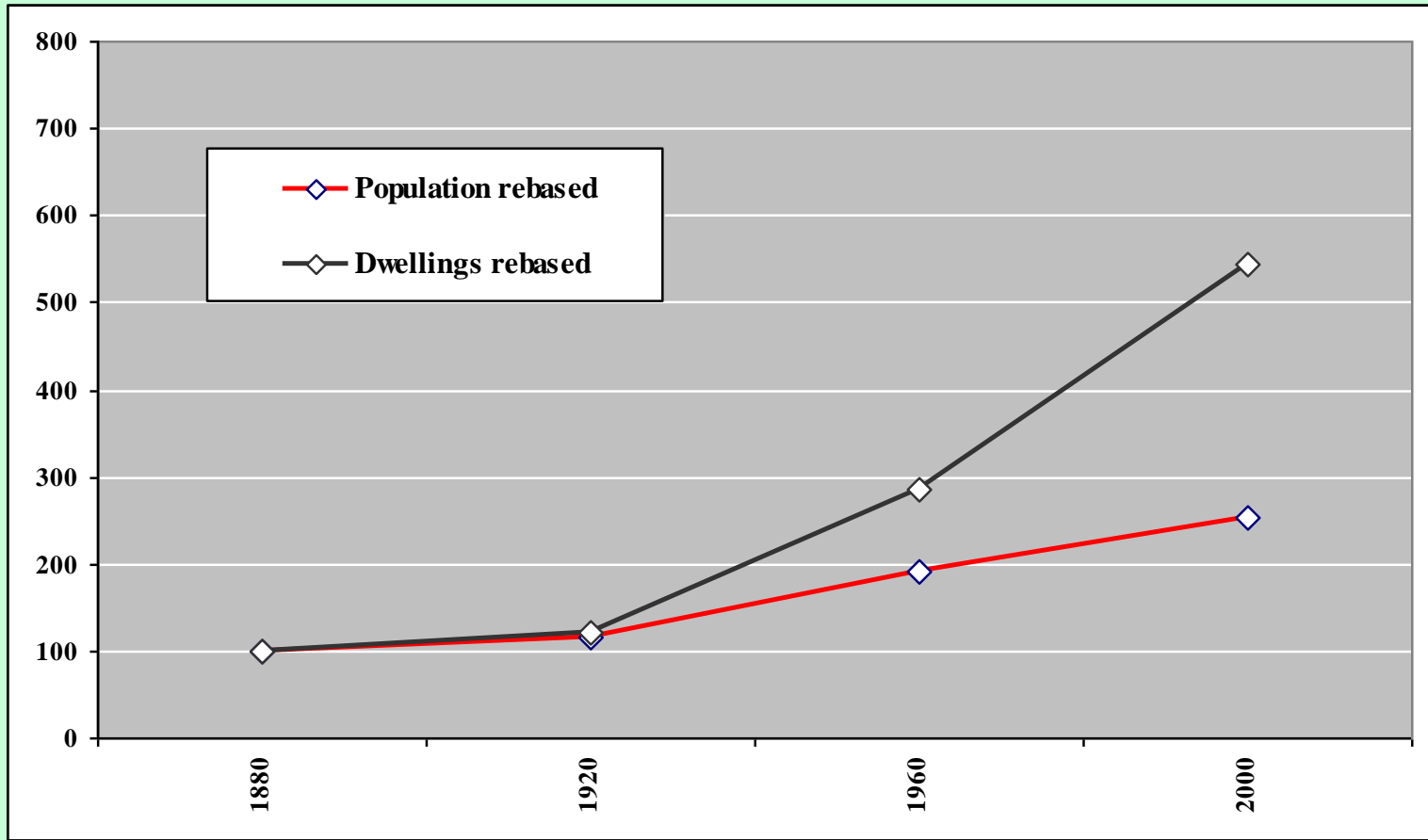
Both numbers of houses, and the built area, have nearly doubled



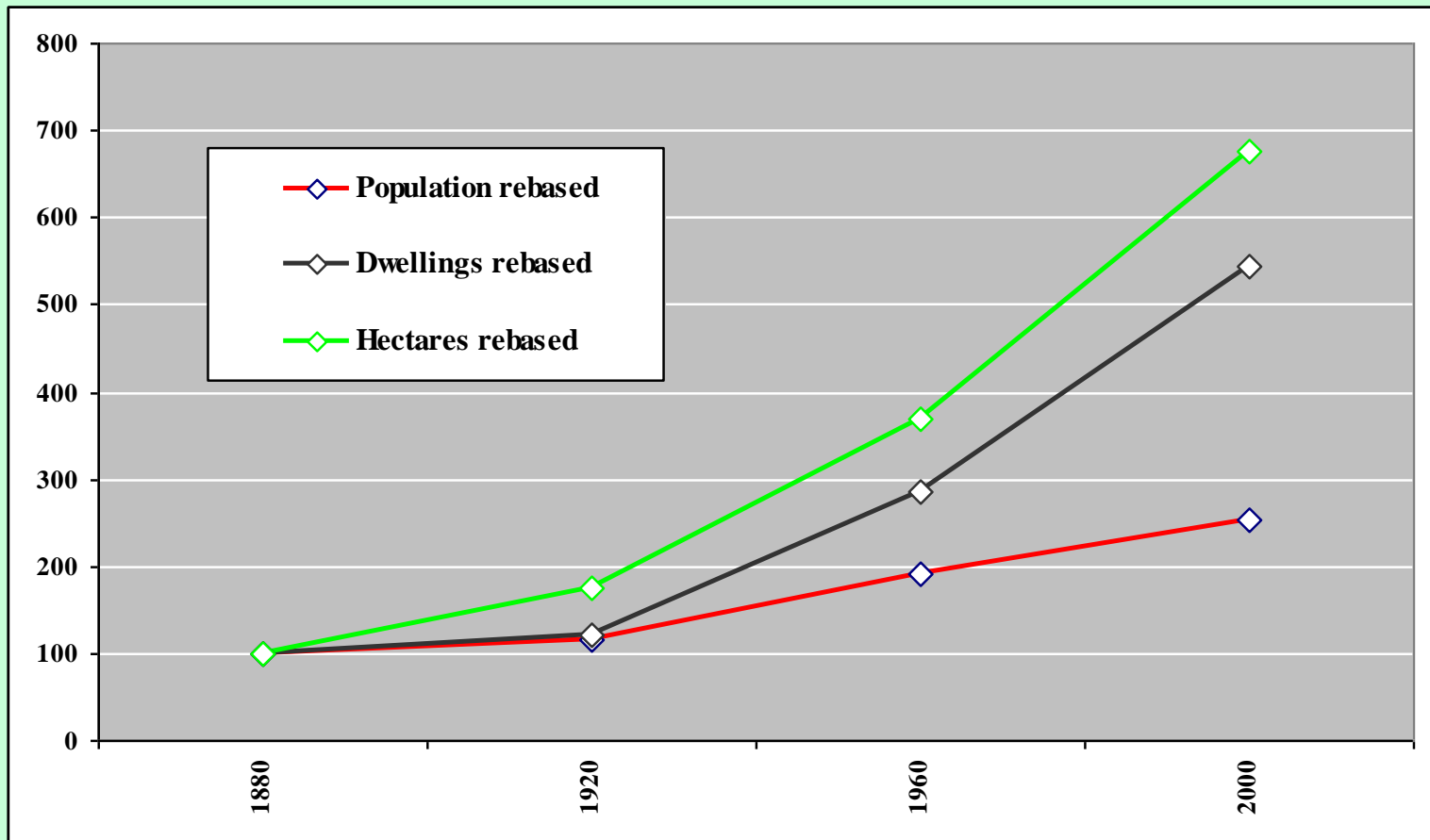
The average number of people living in each dwelling has fallen from 4.8 in 1880 to 2.2 in 2000



The population of Shrewsbury has increased from 26,478 in 1880 to 67,126 in 2000 (154% or 0.72%pa compound)



The number of dwellings in Shrewsbury has increased from 5,509 in 1880 to 29,959 in 2000 (444% or about 1.42%pa compound)



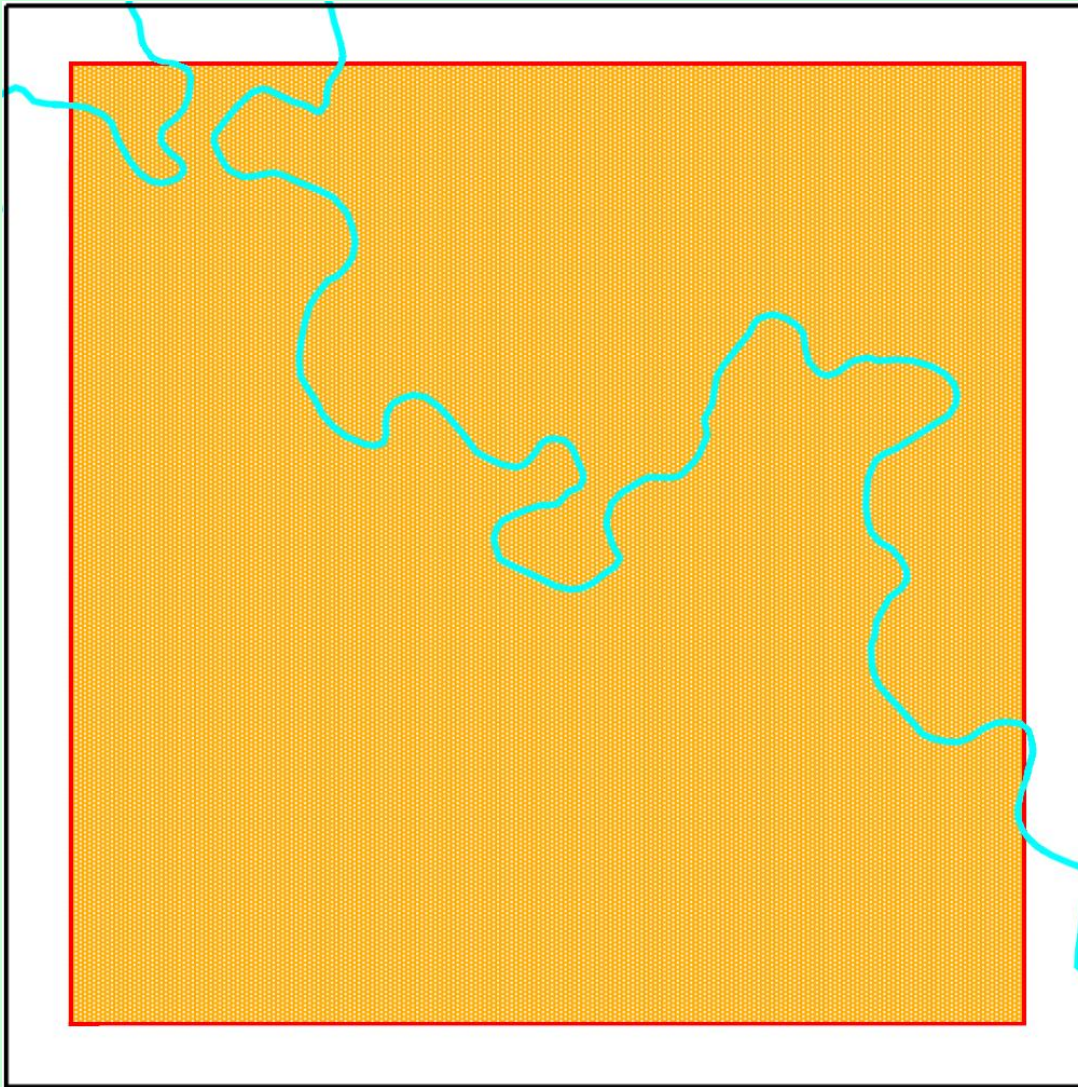
The built area of Shrewsbury has increased from 320Ha in 1880 to 2,167Ha in 2000 (577% or about 1.61%pa compound)

So, what does the future look like?

If we look at the rate of growth over the 120 years from 1880 to 2000 we find that the built area of the town has grown by an average of 1.61% each year.

If that rate were to continue for the next 80 years your grandchildren, or perhaps great-grandchildren, would be looking at a town that almost filled our 10 km square.

Shrewsbury in 2080



???

Hectares

7,756

And it would be completely filled in only another 16 years, at that average growth rate of 1.61% a year. But since 2000 the growth in house numbers has in fact been about 3% a year